

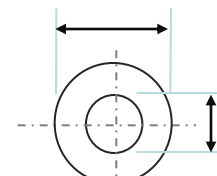
Rated capacity <sup>(1)</sup>	Min. 2700mAh
Nominal capacity <sup>(2)</sup>	Min. 2750mAh Typ. 2900mAh
Nominal voltage	3.6V
Charging	CC-CV, Std. 1365mA, 4.2V, 4.0 hrs
Weight (max.)	47.0g
Temperature	Charge: +10 to +45° C Discharge: -20 to +60° C Storage: -20 to +50° C
Energy density	Volumetric: 577 Wh/l Gravimetric: 207 Wh/kg

(1) At 20° C (2) At 25° C

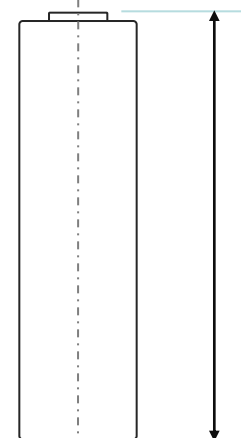
(3) Energy density is calculated using bare cell dimensions (without tube).

## Dimensions

Max. 18.5 mm



9.0 mm



Max. 65.3 mm

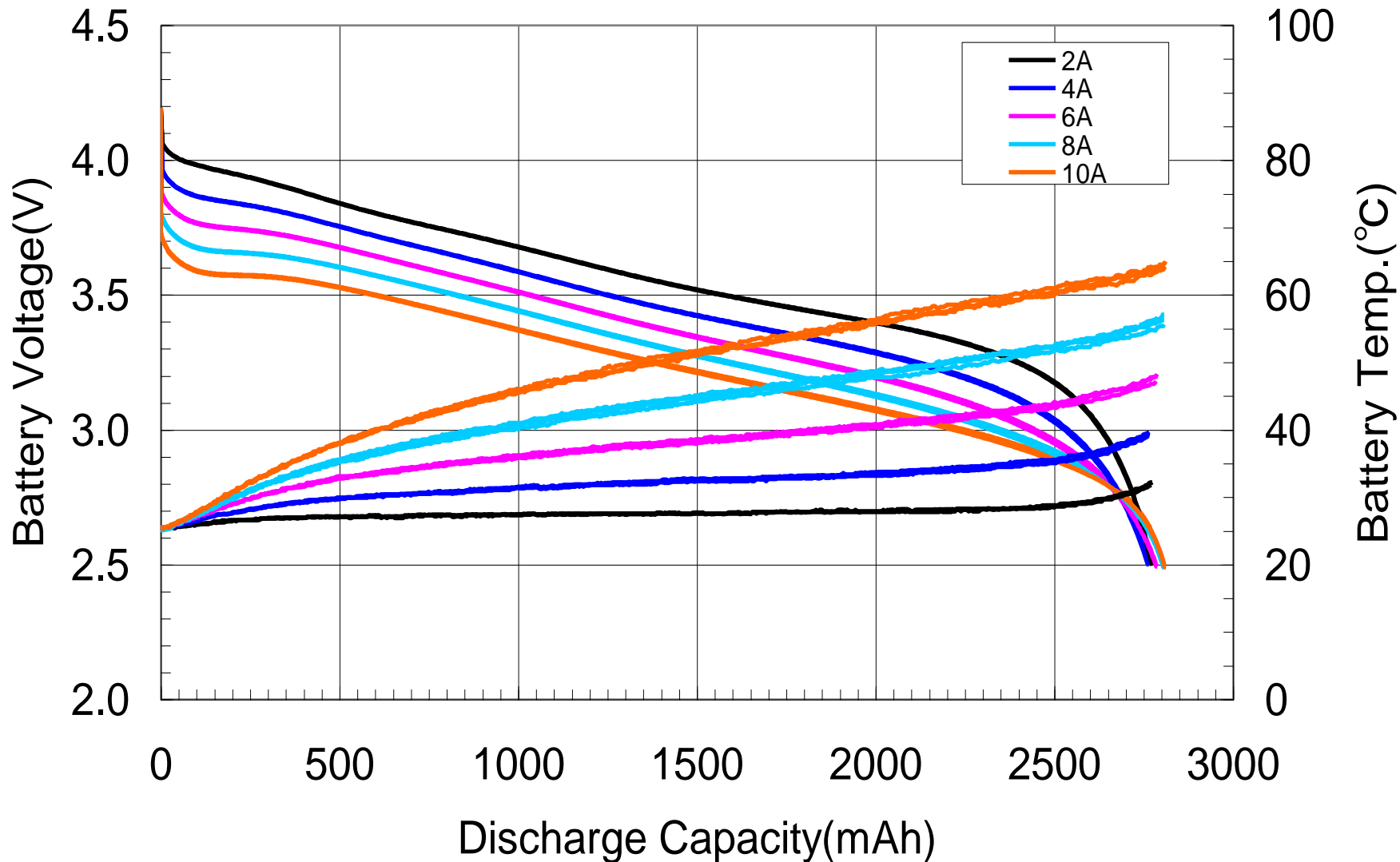
\*With tube

When designing a pack, refer to the cell's mechanical drawing for precise dimensions.

# NCR18650PF Discharge characteristics

Charge :CC-CV:1.365A-4.2V(55mA cut) at 25°C

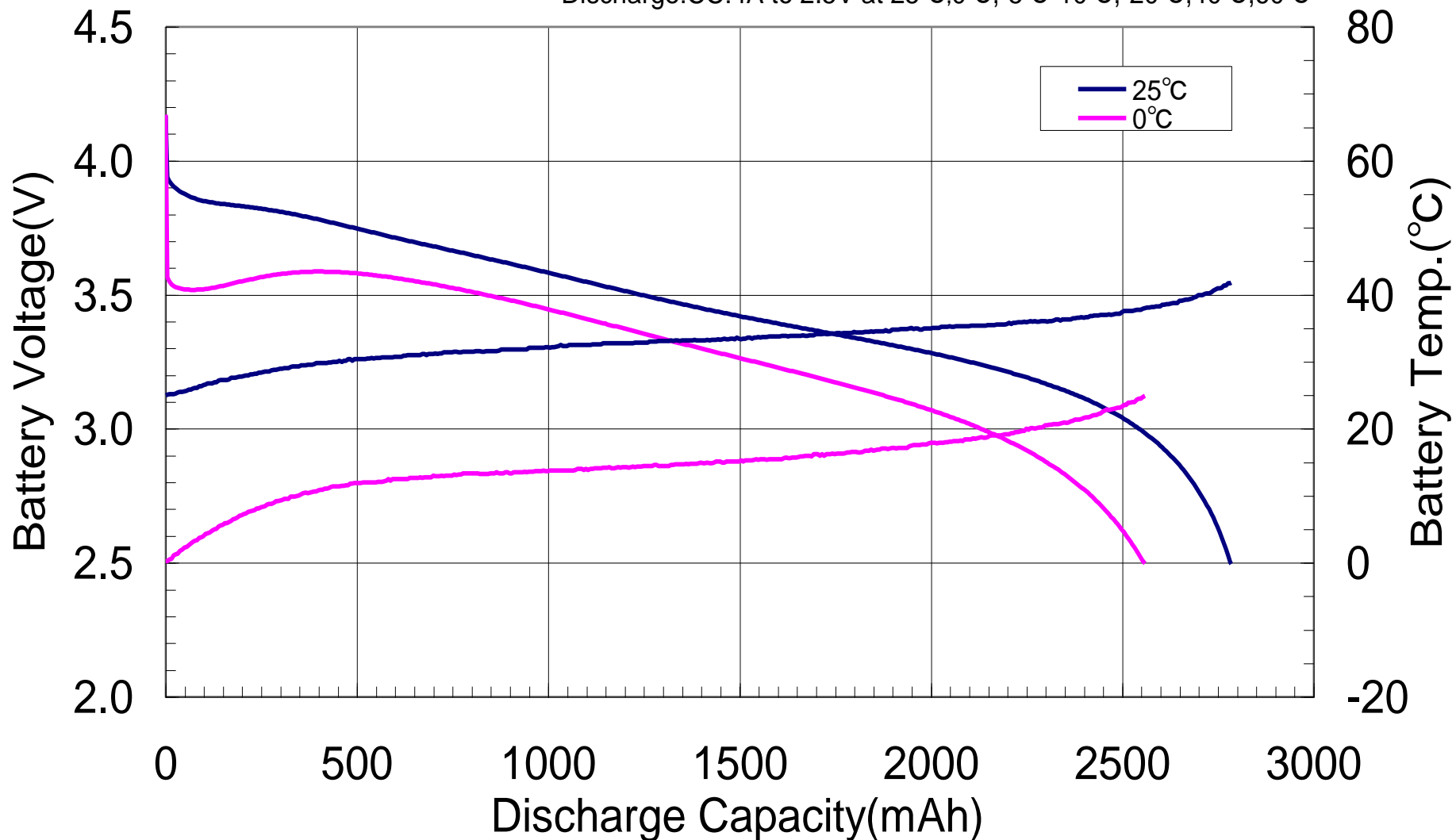
Discharge:CC:2A,11tA,4A,5A,6A,8A,10A to 2.5V at 25°C



# NCR18650PF Discharge characteristics

Charge :CC-CV:1.365A-4.2V(55mA cut) at 25°C

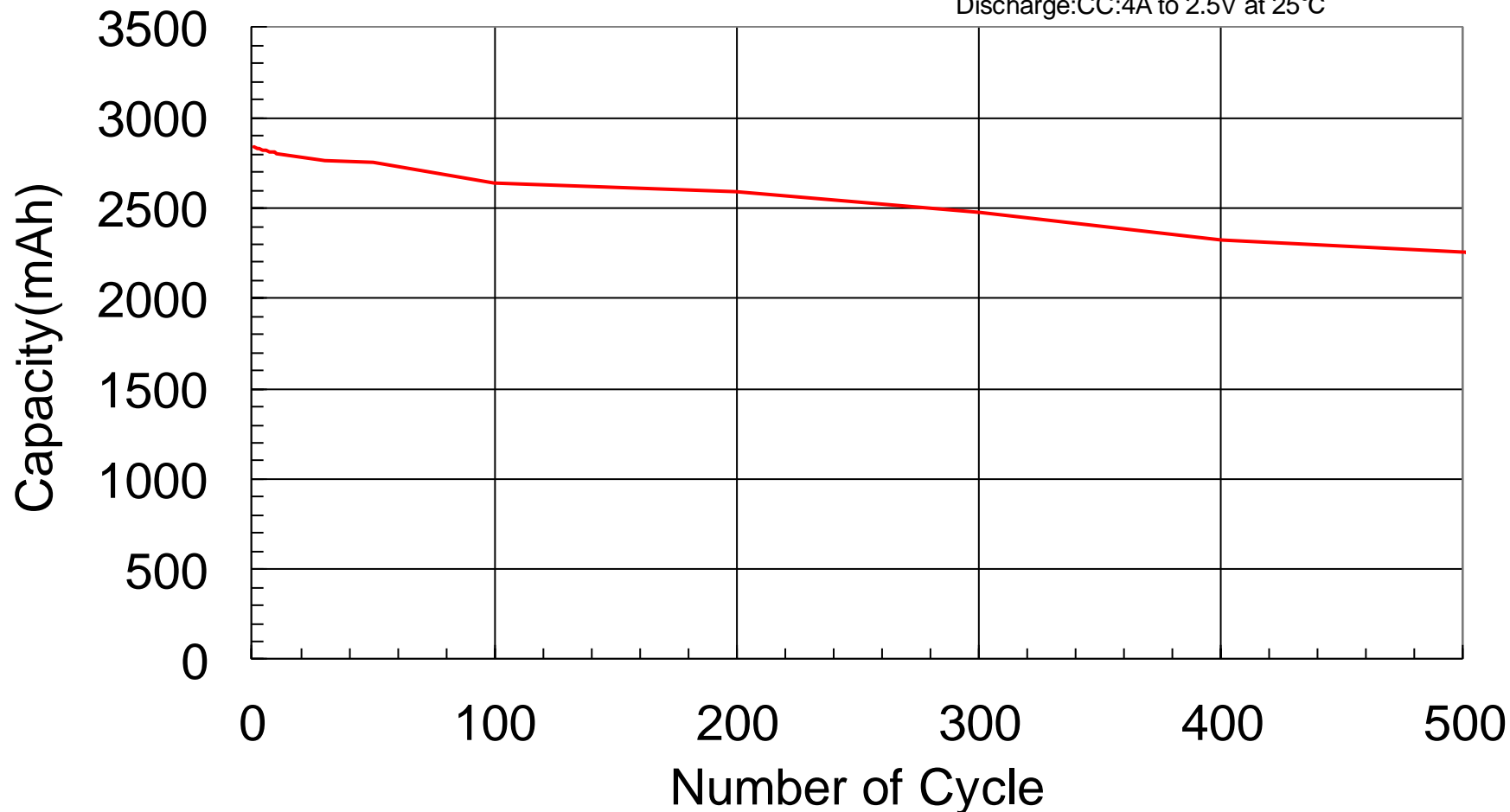
Discharge:CC:4A to 2.5V at 25°C,0°C,-5°C-10°C,-20°C,40°C,60°C



# NCR18650PF Cycle life characteristics

## 4A discharge cycle test

Charge :CC-CV:1.365A-4.2V(55mA cut) at 25°C  
Discharge:CC:4A to 2.5V at 25°C



**Panasonic**